



Elevating and Amusement Devices Safety Division	Ref. No.: 522 / 04	Rev. No.: 1
DIRECTOR'S SAFETY ORDER	Date: September 20, 2004	Date: September 22, 2004

IN THE MATTER OF:

**THE TECHNICAL STANDARDS AND SAFETY ACT 2000,
S.O. 2000, c. 16**

- and -

**ONTARIO REGULATION 221/01 made under the
Technical Standards and Safety Act 2000
(Amusement Devices)**

Subject: Wisdom "Sizzler" Ride - IMMEDIATE SHUT DOWN ORDER
Sent to: All Amusement Devices Licensees & Consultants

The Director. Amusement Devices Regulation (O.Reg. 221/01) pursuant to his authority under section 14 of the *Technical Standards & Safety Act* hereby orders the following:

1. EFFECTIVE IMMEDIATELY

All "Sizzler" rides, manufactured by Wisdom Manufacturing Inc., must be removed from service and shall not be put back into service or used until the Owners have complied with the instructions below.

2. INSTRUCTIONS

Prior to returning the ride in question into service, Owners shall:

- 2.1 Comply with Wisdom Manufacturing Inc, bulletins dated August 1994 and May 1997 (attached).
- 2.2 Comply with the findings issued in the Massachusetts Department of Public Safety Directive dated September 20, 2004 (attached).
- 2.3 Provide to TSSA written confirmation in accordance with Section 2.4 that the Safety Order has been complied with in full and the ride meets the requirements of the attachments referenced in Sections 2.1 and 2.2.
- 2.4 The owner of the device in question shall obtain permission from the Director to operate the ride by faxing the **Notification** (attached) confirming compliance with this order to TSSA **fax number (416) 231-7525**. By faxing the **Notification** to the Director, the owner of the ride is confirming completion of the work on the ride in accordance with this Safety Order.

3. BACKGROUND

A recent incident in Massachusetts involving the "Sizzler" ride has prompted the release of this Director's Safety Order. Summary notes have been attached regarding the Massachusetts incident.

<http://www.rideaccidents.com/>

Sizzler breaks apart at Massachusetts carnival; 1 killed

(Sunday, September 19, 2004) - At a church carnival in Shrewsbury, Massachusetts, one man was killed and another was critically injured when parts of a Sizzler ride broke apart. A third person suffered minor injuries and was treated at the scene.

Witnesses say the two men fell out of their car when the outer side of their seat broke off. One of them was then struck by another of the ride's cars as he attempted to get away from the ride.

The ride is owned and operated by Jaro Amusements of Carlisle, Massachusetts.

The Massachusetts Department of Public Safety, the Worcester district attorney's office, and local police are investigating the accident. The National Consumer Product Safety Commission is also expected to investigate.

Rob Kremer, Acting Director, TSS Act 2000, (Amusement Devices)



NOTIFICATION TO DIRECTOR
OF
COMPLIANCE WITH DIRECTOR'S ORDER
522/04

Re: Wisdom Sizzler

Attention: Director, TSS Act 2000, (Amusement Devices)

Fax Number (416) 231- 7525

I _____ confirm that I am the owner of the amusement device known as
(print name)

the "Sizzler" , AD # _____ ,

and have personally ensured that all required work has been completed in accordance with Director's
Order 522/04.

Indicate by initialing that the following has been completed:

Initials

- Completed all work in accordance with Wisdom Manufacturing Inc, bulletin dated August 1994
Completed all work in accordance with Wisdom Manufacturing Inc. bulletin dated May 1997
Completed all work in accordance with the findings issued in the Massachusetts Department
of Public Safety Directive dated September 20, 2004

Signature of Owner

Name of Company (Licensee)

Date



WISDOM INDUSTRIES, INC.



REQUIRED INSPECTION NOTICE

DATE: AUGUST 1994
RIDE: SIZZLER
SUBJECT: INSPECTION OF SEAT MOUNTING BOLTS

It has been determined by Wisdom Industries that the retaining bolts that fasten the internal car frame on the SIZZLER to the spindle sweep must be checked for tightness on a regular basis. If the fasteners become loose the seat can come loose resulting in possible serious injury to the passengers.

The owners of SIZZLER amusement rides are therefore required to inspect their rides as described in this bulletin. Perform the inspection using the instructions on the enclosed page of this bulletin. Return certificate of compliance within 15 days of the receipt of this bulletin. Inspection must be performed within 1 week.

Immediately check seats for looseness by lifting the rear right side corner of the fiberglass body. If any looseness is noticed do not use that seat until the inspection is performed.

If there are any questions regarding the instructions on this inspection, contact Wisdom Industries.

THE INSPECTION OF THE SIZZLER RIGHT SIDE SEAT INTERNAL FRAME MOUNTING BOLTS.

SIZZLERS WITH THE PLASTIC "S" PANEL OR THE FIBERGLASS COVERS OVER THE SEAT UNLOCKING SOLENOIDS.

1. Remove the "S" panel or the fiberglass cover on the right side of the car.
2. Reach down into the seat and check to see that the two mounting bolts in the frame are tight. If the bolts are loose, broken, or missing remove them and reinstall using Loctite to secure the bolts.
3. If you are unable to reach the bolts through the hole, follow the steps:
"FOR SIZZLER THAT DO NOT HAVE "S" PANELS."

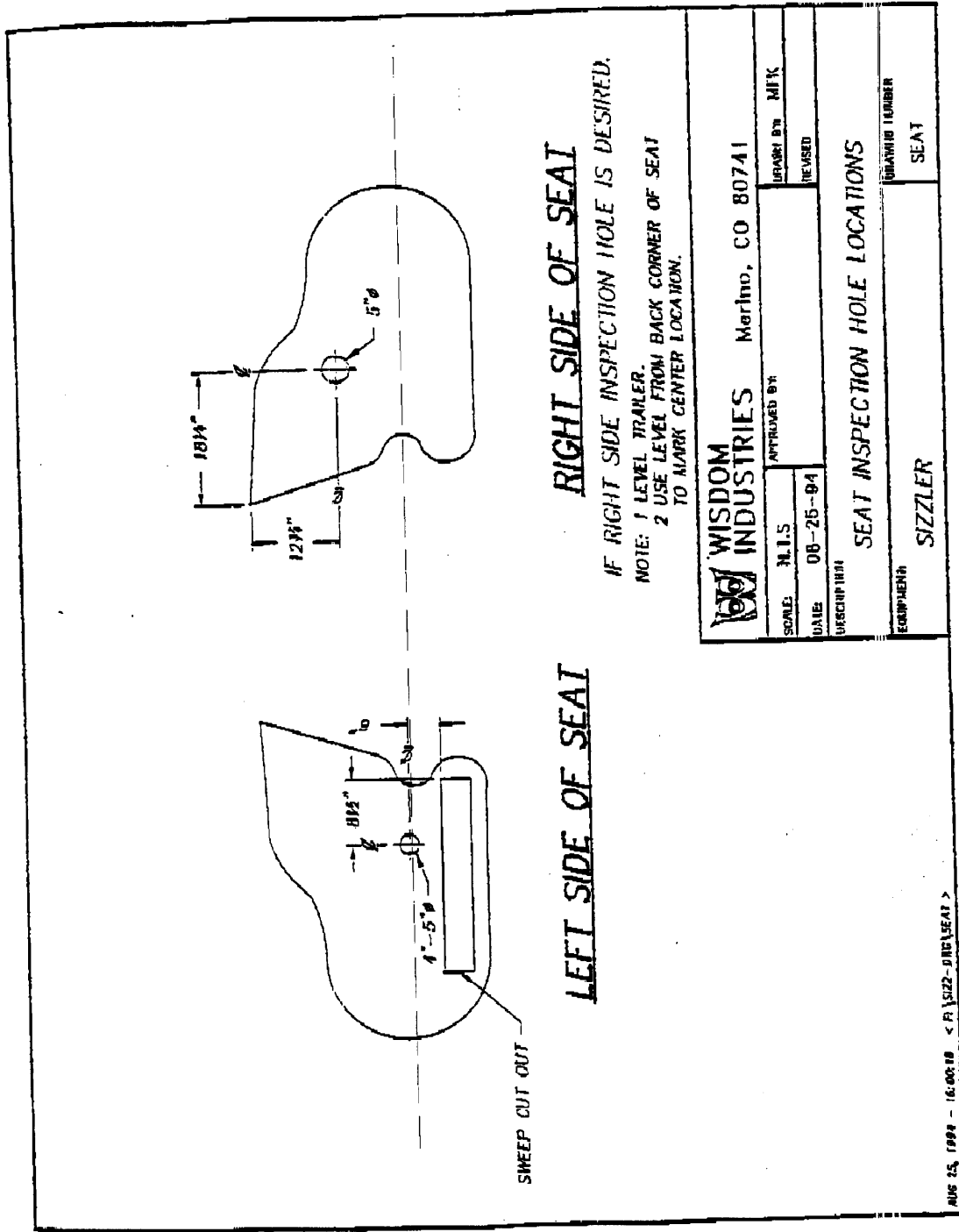
FOR SIZZLERS THAT DO NOT HAVE "S" PANELS

1. Remove the two bolts holding the seat lock brass to the side of the car.
2. Slide out the quarter side panel and check the two internal frame mounting bolts for tightness. Replace if they are loose or broken and use Loctite.

FOR INSPECTION OF THE LEFT SIDE SEAT IRON

1. Remove seat liner OR cut a hole in the left side of the car body using a hole saw. Review the enclosed drawing for the location of the hole. Using a minimum of a 3" hole saw up to 5" diameter.
3. Locate the hole, drill the hole through the fiberglass and inspect the two mounting bolts. If you would like a cover for this hole, contact us and we will provide inspection covers for these holes.
4. Check the bolts for looseness, missing bolts or sheared bolts and replace with grade 5-7/16" fine thread bolts and Loctite if needed.

Please notify Wisdom Industries following this inspection and notify us to the status of the bolts on your ride. Following this inspection, please return the enclosed compliance sheet. If you have any questions, please contact Wisdom Industries.



RIGHT SIDE OF SEAT

IF RIGHT SIDE INSPECTION HOLE IS DESIRED,
 NOTE: 1 LEVEL TRAILER.
 2 USE LEVEL FROM BACK CORNER OF SEAT
 TO MARK CENTER LOCATION.

LEFT SIDE OF SEAT

SNEEP CUT OUT

WISDOM INDUSTRIES Merino, CO 80741	
SCALE: N.I.S.	APPROVED BY: [UNASH] BY: MFK
DATE: 08-25-94	REVISION:
DESCRIPTION: SEAT INSPECTION HOLE LOCATIONS	
EQUIPMENT:	SEAT
SIZZLER	

AUG 25, 1994 - 16:00:10 < F:\5122-010\SEAT >



WISDOM INDUSTRIES, INC



SIZZLER BULLETIN

DATE: MAY 1997
RIDE: SIZZLER/DELUXE SIZZLER FOOT TUB
SUBJECT: Inspect the pivot hole on each side of each foot tub on the SIZZLER/DELUXE SIZZLER for corrosion and excessive wear.
COMPLIANCE: Inspection daily before operating ride.

Inspection

1. Inspect the pivot hole on the foot tub for excessive wear. Approximately 1/8th maximum play on foot tub next to hinge.
2. Inspect the fiberglass in the hinge area for cracks or fracturing which would indicate the internal steel is broken or worn to the point of relying on the fiberglass for strength. (Hole should be centered on boss on side of fiberglass foot tub.)
3. Check clearance of the foot tub to the gooseneck. Minimum 2" clearance with a person standing on the step of the foot tub. Measure to the corner of the gooseneck.
4. If foot tub noticeably slopes down, perform inspection before allowing passengers in the seat. Close any seat that does not meet this inspection criteria.

Replacement of the foot tub or foot tub internal steel is required for repair.

****WARNING****

Failure of the foot tub hinge point will result in injury to your passengers.

Contact Wisdom Industries with any discrepancies on the foot tubs that you find which will require replacement or reinforcement of the foot tub hinge.

If you no longer own this ride, please contact us so we can update our records. Thank you for your cooperation in this matter. If you have any questions about this bulletin, please feel free to contact us at 1-800-634-6097 or 1-970-522-7515.



The Commonwealth of Massachusetts
Department of Public Safety

One Ashburton Place, Room 1301
Boston, Massachusetts 02108-1618

Phone (617) 727-3200

Fax (617) 727-5732

Mitt Romney
Governor

Kerry Healey
Lieutenant Governor

Edward A. Flynn
Secretary

Thomas G. Gatzunis, P.E.
Commissioner

September 20, 2004

To: All Owners / Operators of Amusement Devices

From: Thomas G. Gatzunis, Commissioner

RE: **Suspension of Permit to Operate Wisdom “Sizzler” Amusement Rides**

The Massachusetts Department of Public Safety is immediately suspending all permits to operate any and all Wisdom “Sizzler” amusement rides until owners have complied with this directive.

You are directed to perform a thorough review of each car to ensure that the proper bolts and lock nuts as specified by the manufacturer are in place and secure. Use of alternate or smaller bolts and/or nuts that are not in accordance with the ride manufacturer are expressly prohibited.

By design, each car side panel is secured with two (2) – 7/16 inch grade 5 bolts that screw into tapped holes at the base of the seat frame. Use of smaller sized bolts is prohibited unless engineered and approved by the ride manufacturer.

Verification shall be performed by removing the fiberglass seat on each car. This will enable you to view the bolt closely to ensure proper sizing and grade as designed by the manufacturer.



(two bolts per side panel)



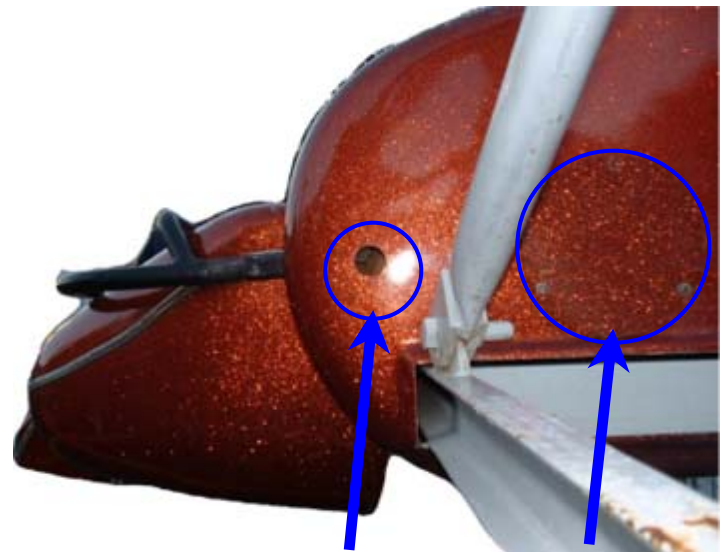
The lap restraints and foot tub are secured to the car side panels with two (2) 5/8" (requires use of a 15/16" socket), grade 5 bolts secured with lock nuts. These nuts shall be tightened as specified by the manufacturer. These nuts can be viewed and tightened from the side access panels on the car. Use of nuts that do not have locking capacity is prohibited.

Once you have completed the review on your ride, you are directed to provide a written report to the Department verifying compliance with this directive, under the signature of the owner and the person who performed the physical inspection, before the permit to operate this ride is re-issued.

This order shall remain in effect until such time that the Department has cleared your ride for permitting.

Failure to comply with this directive will result in the immediate suspension/revocation of your permits to operate all amusement rides in the Commonwealth.

If you have any questions, please feel free to call Assistant Chief of Inspections, Mark Mooney at (617) 727-3200 ext. 25208.



Location of 5/8" locknut

Access Port

*Cc: Edward A. Flynn, Secretary of Public Safety
Mark F. Mooney, Assistant Chief of Inspections
C.A.R.E.S member jurisdictional authorities
Bev Kohen, Regional Director, USCPSC*